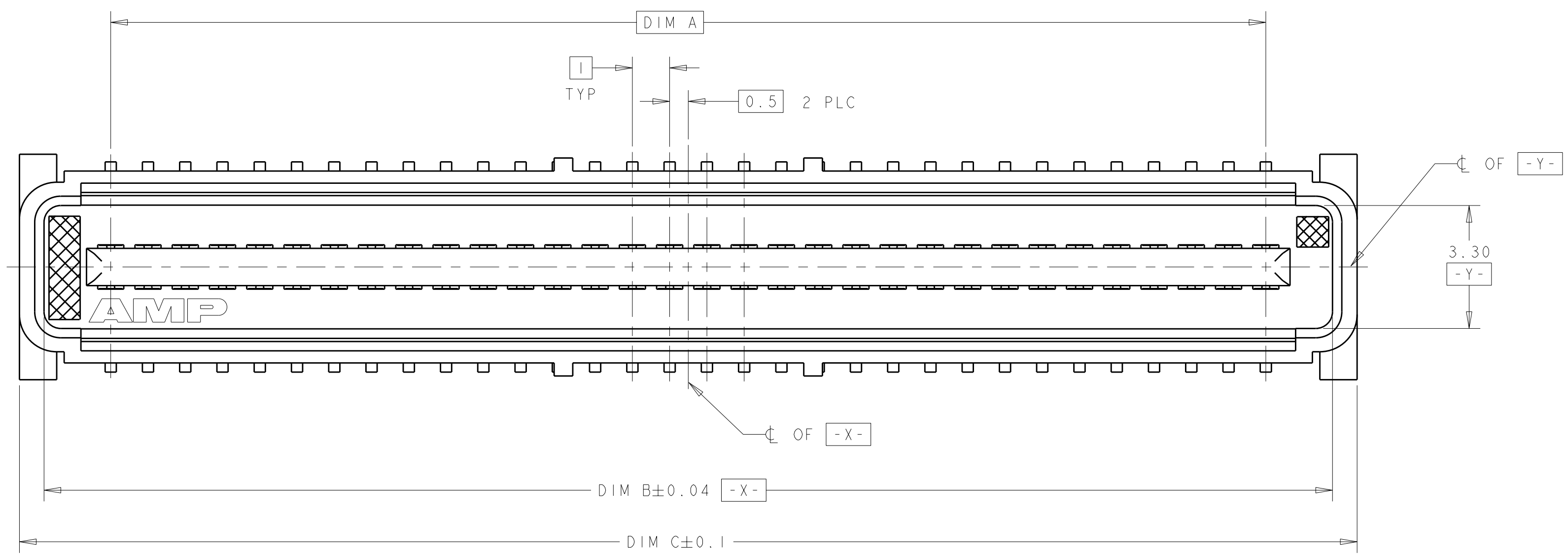
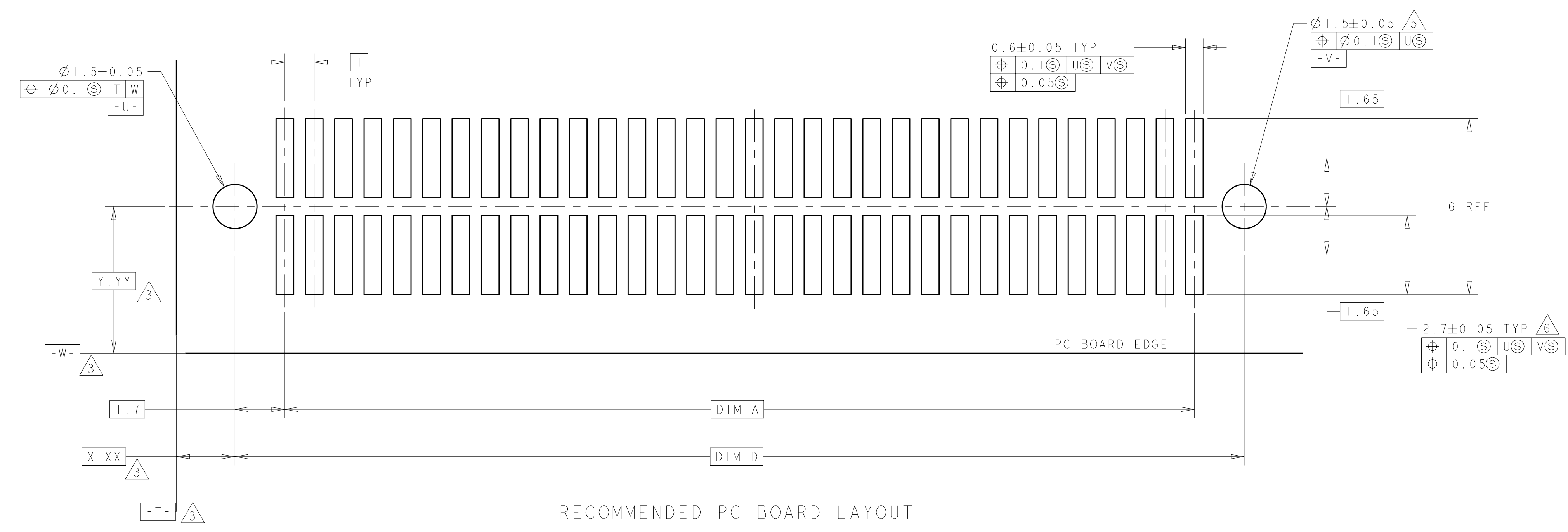
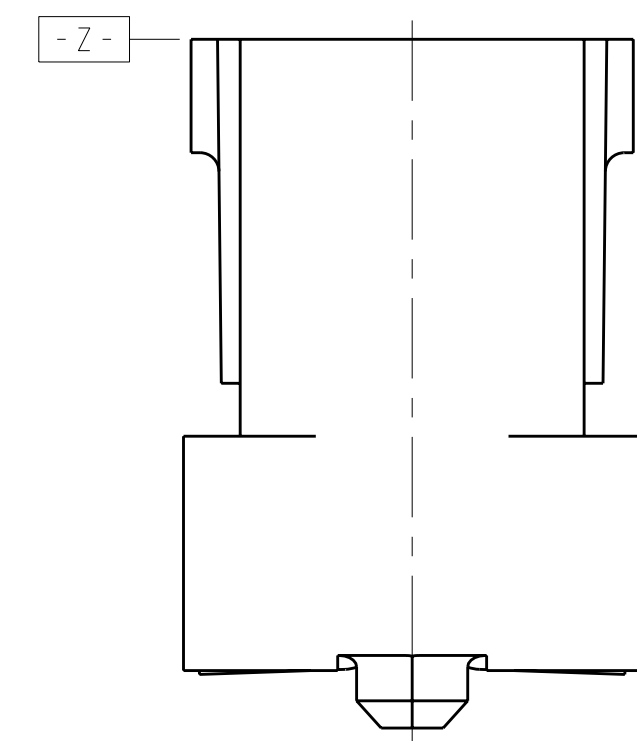
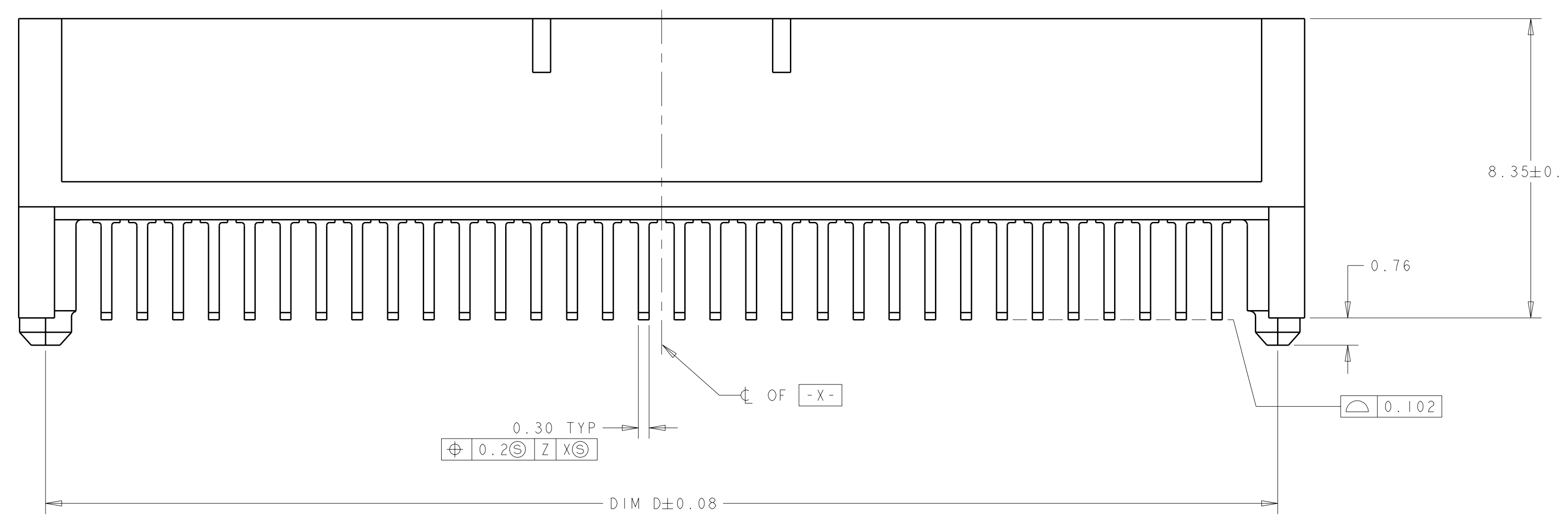


REV. NO.		REVISIONS			
REV	DATE	DESCRIPTION	DATE	BY	APP'D
0	30SEP2004	REV PER EC 0512-0235-04	30SEP2004	BC	RW
A	10JUL2006	REVISED PER ECO-08-008615	10JUL2006	DH	DB



- 1 HOUSING MATERIAL: LIQUID CRYSTAL POLYMER. COLOR; BLACK. CONTACT MATERIAL: PHOSPHOR BRONZE.
- 2 CONTACT FINISH: NICKEL UNDERPLATE ALL OVER, MATING SURFACES PLATED TO MEET PLI PERFORMANCE REQUIREMENTS OF INDUSTRY SPECIFICATION EIA-700AAAB, SOLDER TAILS PLATED TIN.
- 3 DATUM LOCATIONS AND BASIC DIMENSIONS TO BE ESTABLISHED BY THE CUSTOMER. CONSULT AMP ENGINEERING WHEN PLACING MULTIPLE CONNECTORS ON A PC BOARD.
- 4 PACKAGED IN TAPE ON REELS PER EIA-841.
- 5 1.5±0.05 DIAMETER HOLE SHOULD BE USED IF PLACED ON PCB WITH VACUUM PLACEMENT EQUIPMENT.
- 6 SHORTER SOLDER LANDS MAY BE USED PER EIA 700AAAB, HOWEVER 2.7 LENGTH ASSURES OPTIMUM SOLDER FILLET.
- 7 CONTACT FINISH: 0.00381 MINIMUM MATTE TIN PER ASTM B 545 ON SOLDER AREA, 0.00127 MINIMUM GOLD PER ASTM B 488 ON MATING AREA, BOTH OVER 0.00127 MINIMUM NICKEL PER SAE-AMS-QQ-N-290 ON ENTIRE CONTACT.



RECOMMENDED PC BOARD LAYOUT

FINISH	DIM D	DIM C	DIM B	DIM A	MATING CONNECTOR	STACK HGTS	POS	PART NO
7	44.4	45.9	44.58	41	5120524-2	15	84	1-5120527-2
7	44.4	45.9	44.58	41	5120523-2	13	84	1-5120527-2
7	44.4	45.9	44.58	41	5120603-2	12	84	1-5120527-2
7	44.4	45.9	44.58	41	5120521-2	10	84	1-5120527-2
7	34.4	35.9	34.58	31	5120524-1	15	64	1-5120527-1
7	34.4	35.9	34.58	31	5120523-1	13	64	1-5120527-1
7	34.4	35.9	34.58	31	5120603-1	12	64	1-5120527-1
7	34.4	35.9	34.58	31	5120521-1	10	64	1-5120527-1
2	44.4	45.9	44.58	41	5120524-2	15	84	5120527-2
2	44.4	45.9	44.58	41	5120523-2	13	84	5120527-2
2	44.4	45.9	44.58	41	5120603-2	12	84	5120527-2
2	44.4	45.9	44.58	41	5120521-2	10	84	5120527-2
2	34.4	35.9	34.58	31	5120524-1	15	64	5120527-1
2	34.4	35.9	34.58	31	5120523-1	13	64	5120527-1
2	34.4	35.9	34.58	31	5120603-1	12	64	5120527-1
2	34.4	35.9	34.58	31	5120521-1	10	64	5120527-1

DIMENSIONS: mm TOLERANCES UNLESS OTHERWISE SPECIFIED: 9 PLC ± 1 PLC ±0.03 5 PLC ±0.003 4 PLC ± ANGLES ±0°30'		DIMENSIONS: mm TOLERANCES UNLESS OTHERWISE SPECIFIED: 9 PLC ± 1 PLC ±0.03 5 PLC ±0.003 4 PLC ± ANGLES ±0°30'		DIMENSIONS: mm TOLERANCES UNLESS OTHERWISE SPECIFIED: 9 PLC ± 1 PLC ±0.03 5 PLC ±0.003 4 PLC ± ANGLES ±0°30'		DIMENSIONS: mm TOLERANCES UNLESS OTHERWISE SPECIFIED: 9 PLC ± 1 PLC ±0.03 5 PLC ±0.003 4 PLC ± ANGLES ±0°30'		DIMENSIONS: mm TOLERANCES UNLESS OTHERWISE SPECIFIED: 9 PLC ± 1 PLC ±0.03 5 PLC ±0.003 4 PLC ± ANGLES ±0°30'	
MATERIAL: SEE TABLE		FINISH: SEE TABLE		DWG NO: 30SEP04 CHK: R. WERTZ APVD: R. WERTZ PRODUCT SPEC: 502-1079 APPLICATION SPEC: 114-25045 WEIGHT: -		NAME: PLUG ASSY, 1.0mm FH (IEEE 1386) CONNECTOR SIZE: 100779 CAGE CODE: 5120527 SCALE: 10:1		Tyco Electronics Harrisburg, PA 17105-3608 RESTRICTED TO: A	